



2010 Wisconsin Post High School Outcome Survey (WPHSOS) of 2008-09 Exiters and Indicator 14

What is it?

Indicator 14 helps us describe the further education and competitive employment experiences of youth with disabilities as they transition from high school to adult life.

Indicator 14 of the State Performance Plan (SPP) requires states report an unduplicated count of the:

“Percent of youth who are no longer in secondary school, had IEPs in effect at the time they left school, and were:

- A. Enrolled in *higher education* within one year of leaving high school.**
 - B. Enrolled in *higher education or competitively employed* within one year of leaving high school.**
 - C. Enrolled in *higher education or in some other postsecondary education or training; or competitively employed or in some other employment* within one year of leaving high school”**
- 20 USC 1416(a)(3)(B)

Why is This Data Collection Required?

- Federal and State Indicator 14 data collection and reporting requirements
- Set measurable and rigorous state annual goals and targets based on baseline performance
- Meet state and local public reporting requirements
- District improvement planning
- Support the successful transition of all Wisconsin’s youth with disabilities to adult living

What Data are Collected and Reported?

Youth are contacted for a telephone interview and asked questions about where they are living, supports they are using, participation in postsecondary education, training programs and employment, IEP planning, high school experiences, difficulties participating in adult activities as they planned when in high school, and positive things that happened in high school to help them meet their goals. The interview questions are posted on the WPHSOS website at <http://www.posthighsurvey.org/>. This website also provides survey instruments, timelines, resources and training materials.

Who is Included in the Interviews?

The Wisconsin Department of Public Instruction (DPI) must ensure that post high school outcomes data are collected from each district within a 5-year cycle, with Milwaukee Public Schools participating each year. During the required participation year, all district former students who have been identified as exiting school with a regular diploma, a certificate of attendance, by reaching maximum age of eligibility for services (age 21), or by dropping-out at (age 14 or older) are attempted to be contacted for a telephone interview one year after they have exited school. Districts can choose to include all of their exiters, and in non-required years, can conduct their own survey. Interviewer training materials are located on the WPHSOS website.

Who Interviews the Former Students?

CESA #11 has been contracted to assist districts with the data collection and reporting responsibilities of Indicator 14. School districts are responsible for providing post high contact information for exited youth. St. Norbert College Survey Center (De Pere, WI) then contacts the former students on behalf of the school district, at no cost to the district.

When are the Interviews Conducted?

Interviews are conducted one calendar year (June – Sept) after the student has exited school AND the district is in a Self-Assessment Monitoring year. Local results are available for districts to view by November 15 following survey completion.

How are the WPHSOS and Indicator 14 Related?

Districts collect and report post high school outcomes because it is federally required to fulfill Indicator 14 requirements. Data reported publically and to the DPI are limited to just the unduplicated percentage of youth employed and participating in postsecondary education. The WPHSOS survey provides much more information, and can be utilized any year, by any district, can include exiters without disabilities, and can be used to develop and track local improvement activities. All survey questions can be viewed by gender, ethnicity/race, disability and exit reason. District director of special education/pupil services or designees can access their local outcomes at www.posthighsurvey.org.

Contact Information

Mary Kampa, CESA #11, Director of the WPHSOS, maryk@cesa11.k12.wi.us 715-416-0609

Lynese Gulczynski, CESA #11 Program Assistant, lynese@cesa11.k12.wi.us 715-986-2020 ext.2170

“Higher education”: 2 or 4-year degree program provided by community or technical college (2 year) and/or college/university (4 year program).

“Other postsecondary education”: compensatory education, high school completion degree, vocational school, apprenticeship or short-term training program, on-the-job training program, Job Corps, adult education, vocational/technical school which is less than a two year program, Vista, Peace Corps, AmeriCorps, others.

“Competitive employment”: Ninety (90) cumulative days or 3 months of continuous work at an average of 20 hours per week; includes the military and supported employment

“Other employment”: worked for pay or been self-employed for a period of at least 90 days at any time in the year since leaving high school; includes sheltered employment, volunteer, self-employment, work out of their home, farming, others

How Are Youth with Disabilities in Wisconsin Doing One Year After Exiting High School?

Statewide outcomes survey results are compiled and shared annually. You can locate them at www.posthighsurvey.org under STATEWIDE REPORTS. A brief summary of the 2010 survey is provided below.

2010 Survey Response Status of 2008-09 School Exiters (N = 1624)		
	Count	Percent
Total School Exiters	1696	100%
Contacts Made	694	41%
Ineligible Contacts	72	4%
Eligible: Completed Survey	467	29%
Eligible: Refused/Unavailable	155	9%
No Contact/Lost to Follow-up	1002	59%

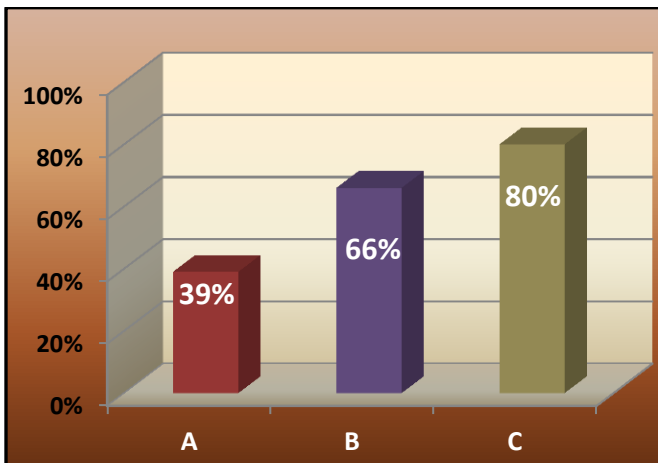
This table shows St. Norbert attempted to contact all 1696 exiters in the 2009 selected school districts. More than one-half of former students could not be contacted due to bad phone numbers. Less than one-third of eligible youth were successfully interviewed. While this is sufficient for valid statewide data, many districts have too few successfully completed interviews to present an accurate view of all exiters.

2010 Wisconsin Statewide Indicator 14 Data for 2008-09 Exiter

Statewide Indicator 14. Indicator 14 represents an unduplicated hierarchical count of participation in postsecondary activities. When a respondent indicates they completed at least one term in higher education, then participation in employment or other postsecondary education is not considered.

Statewide Indicator 14 Outcomes

- 2010 Interview of 2008-09 Exiters:
A = 39.4% B = 66.0% C = 79.9%
- 2009 Interview of 2007-08 Exiters = 70.4%
- 2008 Interview of 2006-07 Exiters = 68.7%
- 2007 Interview of 2005-06 Exiters = 64.5%



Outcomes “Takeaways”

While reviewing state and district data are important, getting a “feel” for the data is just as important as knowing the percents. Consider how this trend information may apply to your classroom and transition planning efforts.

Postsecondary Education	Employment	Comments from Youth
<ul style="list-style-type: none"> • Youth participate in more than one thing (341 “yes” responses for 247 respondents) • About one-half are or have participated in postsecondary education or training • Nearly one third go on to technical college • One quarter participated in an academic program. • About twice as many go to 2-year college than a 4-year college • Females are participating at a higher rate than males • Very few youth who drop-out attend postsecondary education, but many complete their GED 	<ul style="list-style-type: none"> • Over one- half of youth maintain their same high school job 7 or more months after graduating • Over two-thirds were working at the time of the interview • Just one third are or have been “competitively” employed • Youth who dropped-out have nearly the same employment statistics as those who exit with a diploma • Very few youth report asking for accommodations on the job, but almost all receive what they asked for 	<ul style="list-style-type: none"> • “I plan to attend after I earn enough money; I will go this fall” • “I didn’t graduate from HS so I can’t find a job for more than 6 months” • “No time to do the things I enjoy” • “I’m currently looking for work or training opportunities working with the disabled” • “Still trying to find a good job” • “Teachers encouraged me to keep going” • “Getting a job”; “having a job in the HS” • “Phenomenal teacher; she showed me how to work hard and reach my goals” • “Talking to people; knowing how to interact in public”

What Can Teachers Do to Help Ensure a Good Response Rate?

Correspondences with districts about their participation in the post high survey for Indicator 14 are usually with the Director of Special Education, but teachers play an important role in explaining the post high survey to youth and their families and in securing post high school.

1. Give youth and family a copy of the [Survey Questions](#) and “[A Special Note to Youth and Families](#)” at their senior or last IEP meeting.
2. Tell exiting students that they will receive a letter just before the telephone survey one year after high school to remind them of the interview.
3. Get good contact information (include at least one permanent post HS phone number).
4. Update student contact information the year after they exit, paying special attention to youth who have dropped-out.
5. Read the section “Strategies for Locating Youth” in the document “[Indicator 14: Improving Response Rates: A Special Note to Wisconsin Directors of Special Education and Special Education Teachers](#)”

Transition Resources

- [Wisconsin Statewide Transition Initiative](#)
- [National Post-School Outcomes Center](#)
- [National Secondary Transition TA Center](#)
- [National Drop-out Prevention Center – Students with Disabilities](#)
- [Division of Career Development and Transition \(DCDT\) \(Division of CEC\)](#)

- www.wsti.org
- www.psocenter.org
- www.nsttac.org
- www.ndpc-sd.org/
- www.dcdt.org